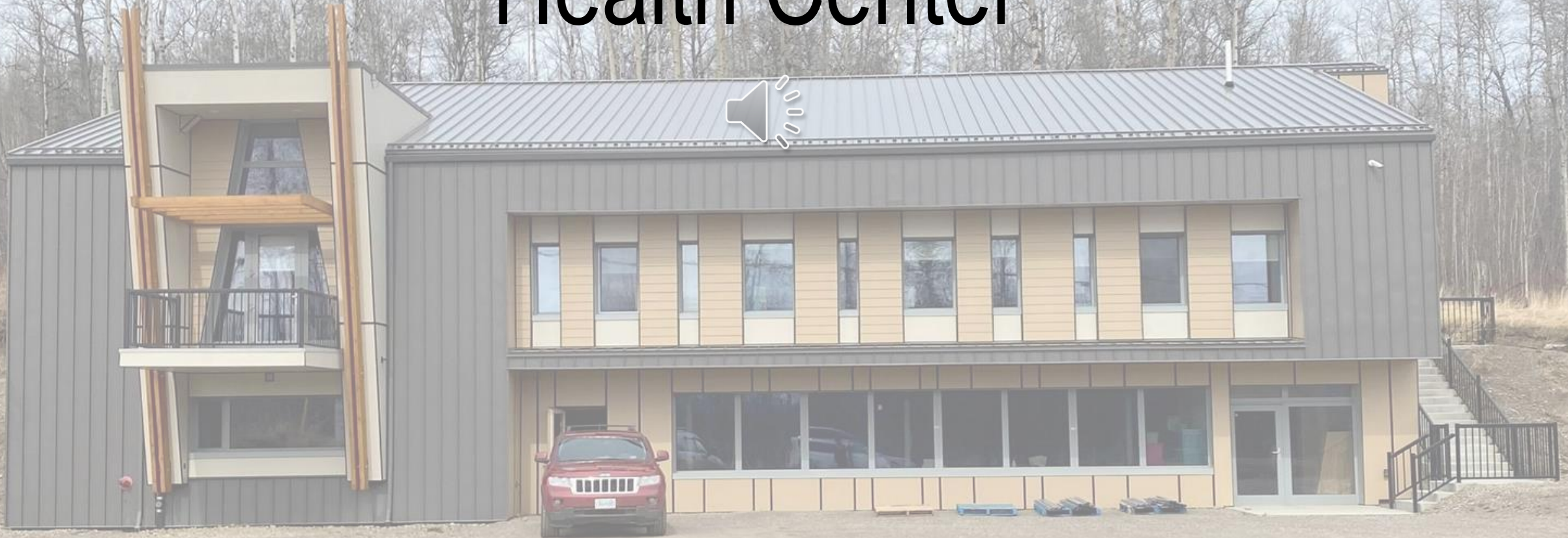


West Moberly First Nations Health Center



Maria Cryingman – Reception/ Medical Travel



I work at WMFN Health Dept as the Receptionist/Medical Travel Clerk been with them since 2011 as part time at first and got hired on full time in 2013, Like the work, but since Covid started in 2020 been here by myself on n off.

I help out the Community Wellness when she comes in to do SA intake, I answer phones take messages do Medical Travel stuff like book rooms/flights when out of town appts is necessary, do Medical Travel Data Entry every month and email it to FNHA, filing, cheq reqs, honoriums, po's, do what is asked by my co-workers, also just got hired as the janitor which I do right after work @ 4:30. Just wish this covid would go away soon it is boring here by myself also sure miss the gatherings like elders bingo/ healthy lunch or just people dropping in to say Hi 😊

Clorrisa Bigfoot- CHR/ Interim
Health Director





Over the last year we have put a lot of efforts toward pandemic response

- Covid 19 supports - quarantine kits – grocery/medication delivery
 - Vaccine Clinics
- Garden boxes to provide food sustainability
- Weekly online family challenges in coordination with Dakii department
- One on one client support with wellness coach
 - Girls youth chit chat group
- BBQ/food kits to celebrate holidays within core bubble
 - Christmas Hampers and Santa delivery
 - Youth snowboarding team

Jo-Ann La Pierre
Community Wellness Worker



Income Assistance

- to assess and determine client's eligibility for IA
 - help with clients facing financial hardship
- To administer the Assisted Living Program that provides home support to clients based on financial need. By evaluating applications for home services and arranging for provision of the service to eligible applicants according to the Assisted Living Policy and Procedure Manual
- administer the A0Q2 program – help parents transition from income assistance to working

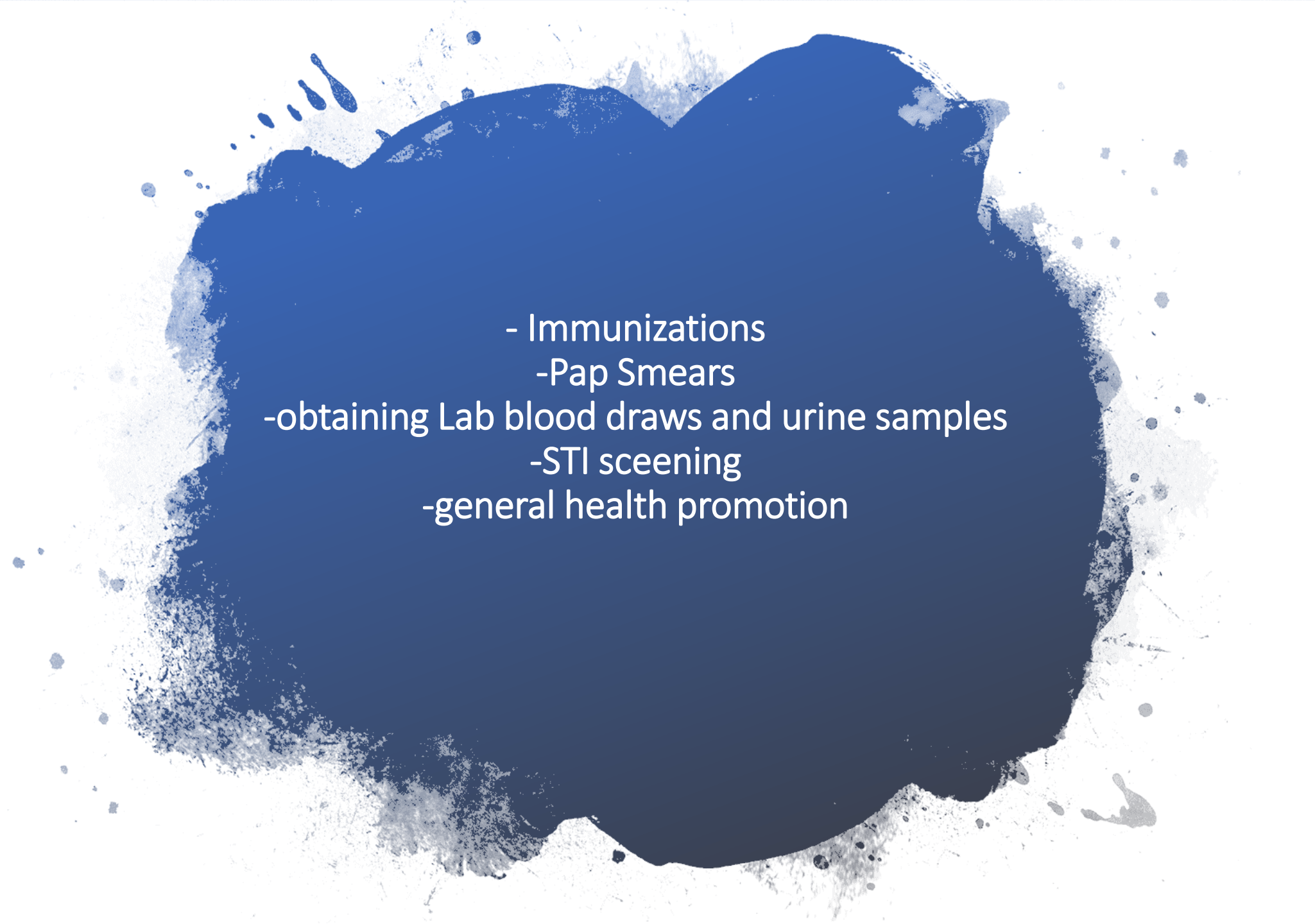
- Lunch Program
- Elder's Tea

Family Support

- support clients that are dealing with the Ministry For Children and Families Development
 - home visits
 - moral support
- help in the development of safety plans for the family
 - help with family court
 - support during family case planning
- support during child and or parent interviews with MCFD or RCMP

Donna Dunn
Remote Certified RN



- 
- Immunizations
 - Pap Smears
 - obtaining Lab blood draws and urine samples
 - STI sceening
 - general health promotion



Other Supports Available at WMFN Health Center

Regular Nurse – Christine Kayembe

Nursing Assistant – Tayo Orebiyi

Mobile Support Team – Mental Health Worker – Shamala

Behavioral Specialist- Deb Coates

Life Coach and Mentor- Shelley Royendyk

Please call to access services

250-788-3622

Charlene Brown

Covid 19 Information officer





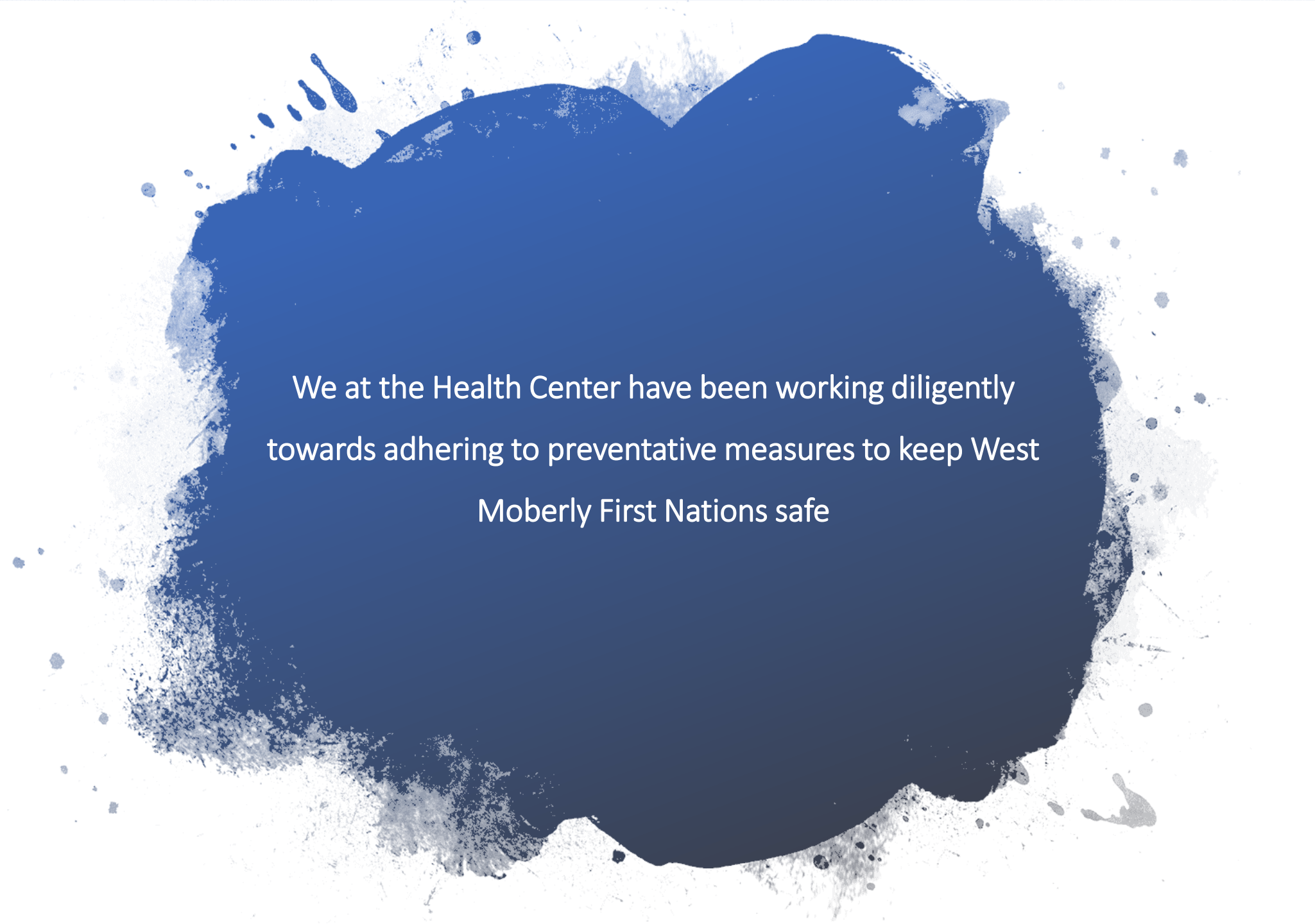
Charlene Brown

Covid 19 Information officer

-Community check-ins

-Covid inquiries

-Manages vaccine clinic interest list


A dark, irregularly shaped graphic with a splatter effect, containing white text. The graphic is centered on a white background and has a rough, ink-like border. The text is centered within the dark area.

We at the Health Center have been working diligently
towards adhering to preventative measures to keep West
Moberly First Nations safe

Stay Safe So we can go back to
THIS!!!!







Thank you from the Health
Team!
Stay Safe!



Questions?